



53218 Thrust ball bearings, single direction

- Popular item

Thrust ball bearings, single direction

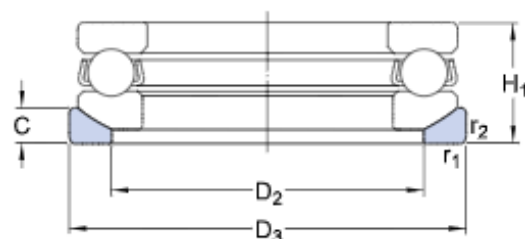
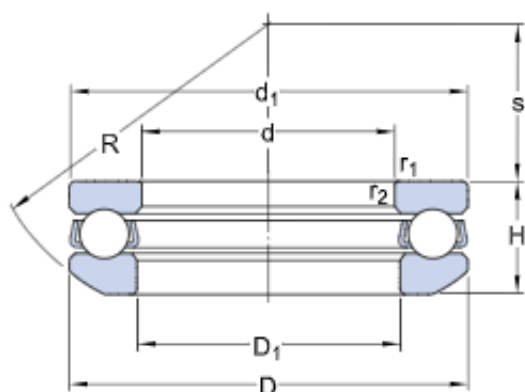
Bearing data

[Tolerances,](#)
table 1

Bearing interfaces

[Seat tolerances for standard](#)
[conditions,](#)
[Tolerances and resultant fit](#)

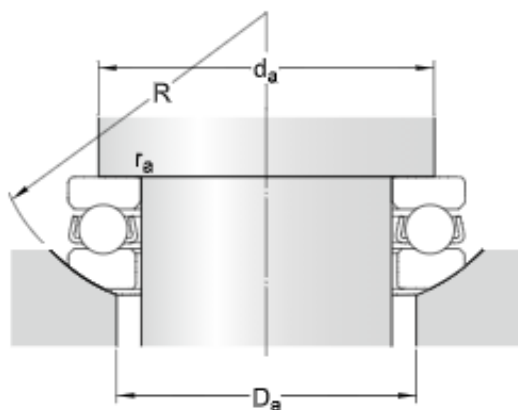
Technical specification



DIMENSIONS

d	90 mm	Bore diameter
D	135 mm	Outside diameter
H	38.5 mm	Height
H ₁	42 mm	Height bearing including seat washer
d ₁	≈ 135 mm	Outside diameter shaft washer
D ₁	≈ 93 mm	Inner diameter housing washer
D ₂	110 mm	Inner diameter sphered seat washer
D ₃	140 mm	Outside diameter sphered housing washer
C	13.5 mm	Height sphered housing washer
R	100 mm	Radius sphered housing washer
s	45 mm	Centre height housing washer sphere
r _{1,2}	min. 1.1 mm	Chamfer dimension washer

ABUTMENT DIMENSIONS



d_a min. 117 mm Abutment diameter shaft

D_a max. 110 mm Abutment diameter housing

r_a max. 1 mm Fillet radius



CALCULATION DATA

C	112 kN	Basic dynamic load rating
C_0	290 kN	Basic static load rating
P_u	10.4 kN	Fatigue load limit
	1 900 r/min	Reference speed
	2 600 r/min	Limiting speed
A	0.55	Minimum load factor

MASS

2.1 kg	Mass bearing (including seat washer where applicable)
--------	---

ASSOCIATED PRODUCTS